

AIR GROUP





Code	Description	Technical Data	Reff. No:
350-01001	Coupling Head	According to : ISO 1728 DİN 74342 Type: Standart Connection: M 16x1.5 Couloire: Red	952 200 021 0 452 200 021 0 000 429 76 30 000 429 77 30 81.51220.6072 0 484 150 102 0 484 150 111



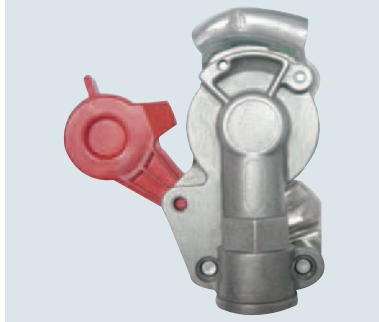
Code	Description	Technical Data	Reff. No:
350-01002	Coupling Head	According to: ISO 1728 DİN 74342 Type: Standart Connection: M 16x1.5 Couloire: Yellow	452 200 022 0 952 200 022 0 000 429 38 30 000 429 51 30 000 429 54 30 000 429 59 30 81 51220 6071 0 484 150 101 0 484 150 112



Code	Description	Technical Data	Reff. No:
350-01003	Coupling Head	According to: ISO 1728 DİN 74342 Type: Standart Connection: M 22x1.5 Couloire: Red	452 200 011 0 000 429 34 30 0 484 150 113



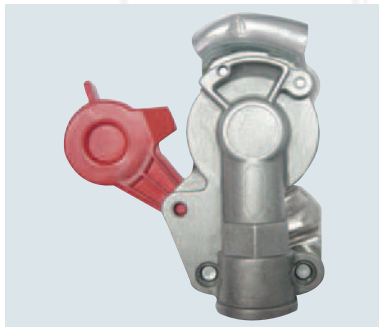
Code	Description	Technical Data	Reff. No:
350-01004	Coupling Head	According to: ISO 1728 DİN 74342 Type: Standart Connection: M 22x1.5 Couloire: Yellow	452 200 012 0 000 429 79 30 000 429 33 30 0 484 150 114



Code	Description	Technical Data	Ref. No:
350-01001A	Coupling Head	According to: İSO 1728 DİN 74342 Type: Standart Connection: M 16x1.5 Model: Haldex Coloure: Red	952 200 021 0 KU 1307 KU 1310 KU 1318



Code	Description	Technical Data	Ref. No:
350-01002A	Coupling Head	According to: İSO 1728 DİN 74342 Type: Standart Connection: M 16x1.5 Model: Haldex Coloure: Yellow	952 200 022 0 KU 1306 KU 1311 KU 1319



Code	Description	Technical Data	Ref. No:
350-01003A	Coupling Head	According to: İSO 1728 DİN 74342 Type: Standart Connection: M 22x1.5 Model: Haldex Coloure: Red	452 200 011 0 KU 1305



Code	Description	Technical Data	Ref. No:
350-01004A	Coupling Head	According to: İSO 1728 DİN 74342 Type: Standart Connection: M 22x1.5 Model: Haldex Coloure: Yellow	452 200 012 0 KU 1304



Code	Description	Technical Data	Reff. No:
350-02001	Coupling Head	According to: ISO 1728 DIN 74254 Type: Automatic Connection: M 16x1.5 Coloure : Red	000 429 80 30 000 429 96 30 452 200 221 0 952 200 221 0 0 484 102 002 KU 4125 KU 4124



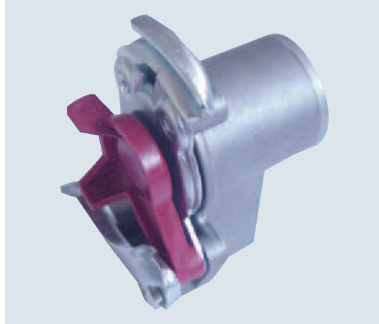
Code	Description	Technical Data	Reff. No:
350-02002	Coupling Head	According to: ISO 1728 DIN 74254 Type: Automatic Connection: M 16x1.5 Coloure: Yellow	000 429 40 30 000 429 81 30 452 200 222 0 952 200 222 0 0 484 102 003 0 484 102 007 KU 4128



Code	Description	Technical Data	Reff. No:
350-02003	Coupling Head	According to: ISO 1728 DIN 74254 Type: Automatic Connection: M 22x1.5 Coloure: Red	000 429 55 30 000 429 34 30 452 200 211 0 0 484 102 008 0 484 102 028 KU 2110 KU 4121



Code	Description	Technical Data	Reff. No:
350-02004	Coupling Head	According to: ISO 1728 DIN 74254 Type: Automatic Connection: M 22x1.5 Coloure: Yellow	452 200 212 0 0 484 102 009 0 484 102 029 KU 4122



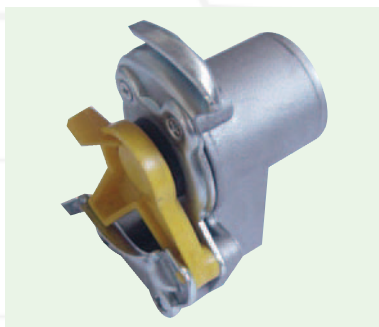
Code	Description	Technical Data	Ref. No:
350-01005	Coupling Head with Line Filter	Type: Standart Connection: M 16x1.5 Coloure: Red Note: Without Nut	952 201 004 0 KU 1401 1518209



Code	Description	Technical Data	Ref. No:
350-01006	Coupling Head with Line Filter	Type: Standart Connection: M 16x1.5 Coloure: Red Note: With Nut	952 201 012 0 952 201 002 0 KU 1400 1518207 1788946



Code	Description	Technical Data	Ref. No:
350-01006M	Coupling Head with Line Filter	Type: Standart Connection: M 16x1.5 Coloure: Red Note: With Metal Nut	952 201 012 0 952 201 002 0 KU 1400 1518207 1788946



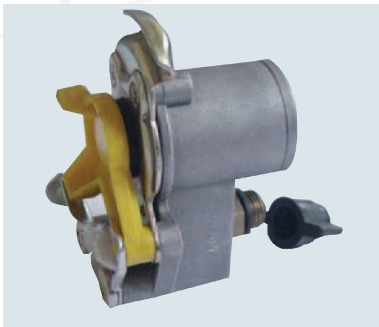
Code	Description	Technical Data	Ref. No:
350-01007	Coupling Head with Line Filter	Type: Standart Connection: M 16x1.5 Coloure: Yellow Note: SWithout Nut	952 201 003 0 KU 1413 1518208



Code	Description	Technical Data	Reff. No:
350-01008	Coupling Head with Line Filter	Type: Standart Connection : M 16x1.5 Couloire: Yellow Note: With Nut	952 201 001 0 952 201 013 0 KU 1410 1518 206



Code	Description	Technical Data	Reff. No:
350-01008M	Coupling Head with Line Filter	Type: Standart Connection : M 16x1.5 Couloire: Yellow Note: With Metal Nut	952 201 001 0 952 201 013 0 KU 1410 1518 206



Code	Description	Technical Data	Reff. No:
350-01009	Coupling Head with Line Filter	Type: Standart Connection: M 16x1.5 Couloire: Yellow Note: Without Nut Note* *: With Connector	952 201 008 0 KU 1411 1518211



Code	Description	Technical Data	Reff. No:
350-01010	Coupling Head with Line Filter	Type: Standart Connection: M 16x1.5 Couloire: Yellow Note: With Nut Note** : With Connector	952 201 007 0 KU 1412 1518210 1788947

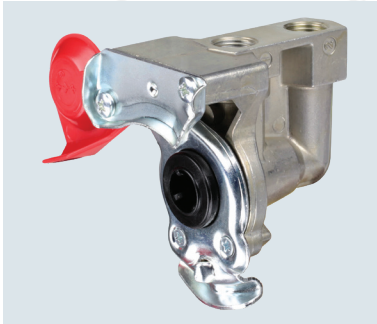
Code	Description	Technical Data	Reff. No:
350-01011	STD Coupling Seal	Coloure: Black	897 550 020 4 000 429 21 84 000 429 24 84



Code	Description	Technical Data	Reff. No:
350-01012	Seal for Coupling with Filter	Coloure: Black	952 201 920 2



Code	Description	Technical Data	Reff. No:
350-02005	Coupling with Double Connection	Type: Subaplı - Automatic Connection : M16x1,5 Coloure: Red Note:	952 200 210 0 07081 076.923-00A



Code	Description	Technical Data	Reff. No:
350-10001	Air Line Filter	Connection : M16x1,5	432 500 021 0





Code	Description	Technical Data	Ref. No:
350-10002	Air Line Filter	Connection : M22x1.5	432 500 020 0 432 500 000 0 0 457 102 002 LA 2100



Code	Description	Technical Data	Ref. No:
350-22001	Double Check Valve	Connection : M16x1.5	434 208 009 0 434 208 028 0 280 478



Code	Description	Technical Data	Ref. No:
350-22002	Double Check Valve	Connection: 3/8-18 NPTF	



Code	Description	Technical Data	Ref. No:
350-09001	Shut-off cock	Connection: M22x1.5 Note: Bronze	452 002 100 0 452 002 132 0 000 429 14 31 0 484 350 001



Code	Description	Technical Data	Reff. No:
350-09001A	Shut-off cock	Connection: M22x1.5 Note: Plastic	452 002 100 0 452 002 132 0 000 429 14 31 0 484 350 001



Code	Description	Technical Data	Reff. No:
350-06001	Three Way Valve	Operating Pressure: 10 bar Temperature Range: -40°C ... +80°C Nominal Diameter: 4 mm L : 46.9 Port Threads: 3xM12x1.5	000 429 23 01 463 013 110 0 463 013 116 0 0481 007 010 0340178 0478 2794



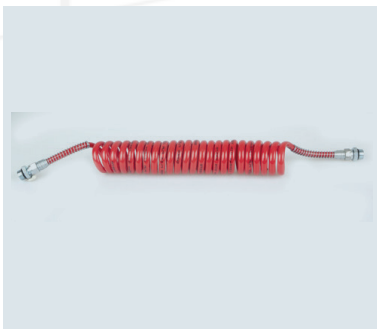
Code	Description	Technical Data	Reff. No:
350-06002	Three Way Valve	Operating Pressure: 10 bar Temperature Range: -40°C ... +80°C Nominal Diameter: 4 mm L : 95.6 Port Threads: 3xM12x1.5	000 434 24 01 463 013 114 0 0481 007 010 113 2041



Code	Description	Technical Data	Reff. No:
350-06003	Three Way Valve	Operating Pressure: 10 bar Temperature Range: -40°C ... +80°C Nominal Diameter: 4 mm L : 37.9 Port Threads: 3xM12x1.5	463 013 112 0 664 52 66 0256 4591 0342 1094 81.52185.6003



Code	Description	Technical Data			Reff. No:
		Supply 1	Delivery 2	Exhaust 3	
350-05001	Quick Release Valve	M22x1,5	M22x1,5	M22x1,5	973 500 000 0
350-05002		M22x1,5	M16x1,5	M22x1,5	973 500 018 0
350-05003		M16x1,5	M16x1,5		
350-05004		3/8-18	3/8-18		
350-05005		1/2-14	3/8-18	3/8-18	973 500 014 0
350-05006		3/8-18	3/8-18	3/8-18	973 500 017 0
350-05007		3/8-18	1/4-18	3/8-18	973 500 011 0
350-05008		1/4-18	1/4-18	3/8-18	
350-05009		1/2-14	1/4-18	3/8-18	
350-05010		M16x1,5	M16x1,5	M16x1,5	973 500 040 0
350-05011		1/2-14	3/8-18		
350-05012		M22x1,5	M16x1,5	M16x1,5	973 500 013 0
350-05013		M22x1,5	M22x1,5	M16x1,5	



Code	Description	Technical Data	Reff. No:
350-180150	Air Brake Coil	According to: DIN 74323 DIN 73378 Material: Polyurethan Coloure: Red Working Length: 4.50 m Connection: M 16x1.5 Note: With Metal Anti Kink Spring	



Code	Description	Technical Data	Reff. No:
350-181150	Air Brake Coil	According to: DIN 74323 DIN 73378 Material: Polyurethan Coloure: Yellow Working Length: 4.50 m Connection: M 16x1.5 Note: With Metal Anti Kink Spring	

Code	Description	Technical Data	Reff. No:
350-180155	Air Brake Coil	According to: DİN 74323 DİN 73378 Material: Polyurethan Coloure: Red Working Length: 5.0 m Connection: M 16x1.5 Note: With Metal Anti Kink Spring	



Code	Description	Technical Data	Reff. No:
350-181155	Air Brake Coil	According to: DİN 74323 DİN 73378 Material: Polyurethan Coloure: Yellow Working Length: 5.0 m Connection: M 16x1.5 Note: With Metal Anti Kink Spring	



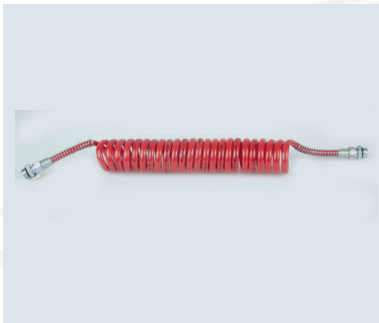
Code	Description	Technical Data	Reff. No:
350-180250	Air Brake Coil	According to: DİN 74323 DİN 73378 Material: Polyurethan Coloure: Red Working Length: 4.50 m Connection: M 22x1.5 Note: With Metal Anti Kink Spring	



Code	Description	Technical Data	Reff. No:
350-181250	Air Brake Coil	According to: DİN 74323 DİN 73378 Material: Polyurethan Coloure: Yellow Working Length: 4.50 m Connection: M 22x1.5 Note: With Metal Anti Kink Spring	



Code	Description	Technical Data	Ref. No:
350-180255	Air Brake Coil	According to: DİN 74323 DİN 73378 Material: Polyurethan Coloure: Red Working Length: 5.0 m Connection: M 22x1.5 Note: With Metal Anti Kink Spring	



Code	Description	Technical Data	Ref. No:
350-181255	Air Brake Coil	According to: DİN 74323 DİN 73378 Material: Polyurethan Coloure: Yellow Working Length: 5.0 m Connection: M 22x1.5 Note: With Metal Anti Kink Spring	



Code	Description	Technical Data	Ref. No:
350-182150	Air Brake Coil	According to: DİN 74323 DİN 743378 Material: Polyurethan Coloure: Black Working Length: 4.50 m Connection: M 16x1.5 Note: With Plastic Anti Kink Coloure of Anti Kink:Red	



Code	Description	Technical Data	Ref. No:
350-183150	Air Brake Coil	According to: DİN 74323 DİN 743378 Material: Polyurethan Coloure: Black Working Length: 4.50 m Connection: M 16x1.5 Note: With Plastic Anti Kink Coloure of Anti Kink: Yellow	



Code	Description	Technical Data	Reff. No:
	350-182155 Air Brake Coil	According to: DİN 74323 DİN 743378 Material: Polyurethan Coloure: Black Working Length: 5.0 m Connection: M 16x1.5 Note: With Plastic Anti Kink Coloure of Anti Kink: Red	
	350-183155 Air Brake Coil	According to: DİN 74323 DİN 743378 Material: Polyurethan Coloure: Black Working Length: 5.0 m Connection: M 16x1.5 Note: With Plastic Anti Kink Coloure of Anti Kink: Yellow	
	350-182250 Air Brake Coil	According to: DİN 74323 DİN 743378 Material: Polyurethan Coloure: Black Working Length: 4.50 m Connection: M 22x1.5 Note: With Plastic Anti Kink Coloure of Anti Kink: Red	
	350-183250 Air Brake Coil	According to: DİN 74323 DİN 743378 Material: Polyurethan Coloure: Black Working Length: 4.50 m Connection: M 22x1.5 Note: With Plastic Anti Kink Coloure of Anti Kink: Yellow	

Code	Description	Technical Data	Reff. No:
350-182255	Air Brake Coil	According to: DİN 74323 DİN 743378 Material: Polyurethan Coloure: Black Working Length: 5.0 m Connection: M 22x1.5 Note: With Plastic Anti Kink Coloure of Anti Kink: Red	



Code	Description	Technical Data	Reff. No:
350-183255	Air Brake Coil	According to: DİN 74323 DİN 743378 Material: Polyurethan Coloure: Black Working Length: 5.0 m Connection: M 22x1.5 Note: With Plastic Anti Kink Coloure of Anti Kink: Yellow	



Code	Description	Technical Data	Reff. No:
350-185001	Plastic Gun		

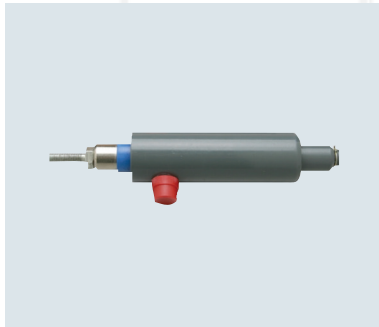


Code	Description	Technical Data	Reff. No:
350-185002	Metal Gun		

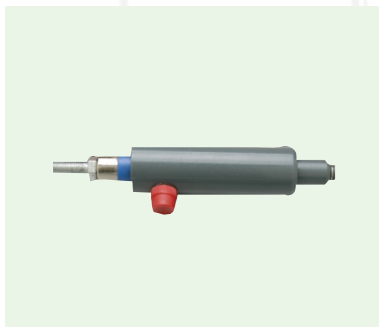




Code	Description	Technical Data		Reff. No:
350-01019	Coupling Handle Set	Red Handle 1	Yellow Handle 2	893 900 033 2
		M16x1,5	M16x1,5	



Code	Description	Technical Data	Reff. No:
350-13001	Control Cylinder	Diameter: 24 mm Stroke: 32/50 mm Piston Red End: M6 Port: M12x1.5	000 072 01 12 SZ 1115



Code	Description	Technical Data	Reff. No:
350-13002	Control Cylinder	Diameter: 24 mm Stroke: 32/50 mm Piston Red End: M8 Port: M12x1.5	000 072 15 12 000 072 18 12 000 072 19 12 000 072 22 12 SZ 1159



Code	Description	Technical Data	Ref. No:
350-00140	Control Cylinder	Diameter: 28 mm Stroke: 48 mm Piston Red End: M8 Port: M12x1.5	000 429 000 0 000 430 49 26 000 430 30 26 SZ 1114



Code	Description	Technical Data	Ref. No:
350-15001	Control Cylinder	Diameter: 35 mm Stroke: 85 mm Piston Red End: M12 Port: M12x1.5	000 430 01 26 000 430 34 26 421 411 020 0 0 482 006 009 SZ 1200



Code	Description	Technical Data	Ref. No:
350-00160	Control Cylinder	Diameter: 50 mm Stroke: 48 mm Piston Red End: M10 Port: M12x1.5	81.15701.6112



Code	Description	Technical Data	Ref. No:
350-00161	Control Cylinder	Diameter: 50 mm Stroke: 48 mm Piston Red End: M10 Port: M12x1.5 Note: Rekorlu / With Fitting	000 140 04 59 000 140 03 59 000 140 07 59 000 140 08 59 SZ 1190

